

Hungarian town offers glimpse at history

Travel, 14E

ARTS & TRAVEL

YOUR LIFE

E

Star-Telegram.com/living

Star-Telegram

Friday, September 19, 2010



Star-Telegram photo illustration/Mark Hoffer; Source: Star-Telegram staff, Getty Images

Dukes of HAZARD

Mattresses, recliners, tires, tubs . . . members of the Tarrant County Sheriff's courtesy patrol have seen it all, usually lying in the middle of the road

By Alyson Ward
award@star-telegram.com

Take a drive on local highways and look at what's scattered along the side of the road. You might spot enough abandoned furniture to furnish a small apartment: Recliners upended on the asphalt. Kitchen chairs scattered across the median. A dust-covered twin-size mattress, lying limp and pitiful on the narrow left shoulder.

So what's going on? People don't know how to tie down their furniture, that's what. Unsecured mattresses,

chairs and TV sets bounce off the backs of trucks and land in the middle of the highway, creating a mess (and a road hazard) for the rest of us.

We wanted to know what happens to all these love seats and box springs when they fly off a truck and plop out onto the road. When a kitchen table lands in the middle of I-35, who picks it up? How on earth do you move a couch to the side of the highway without getting killed? And where does all this debris go when it has been collected?

We tried the Department of Public Safety. Then we tried the Texas Department of Transportation. Eventually, we

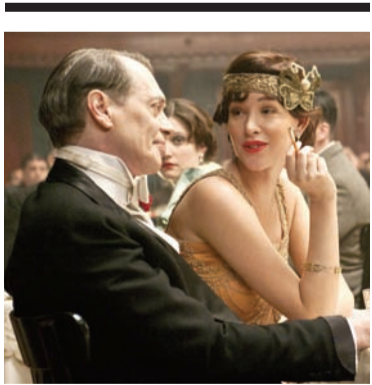
found our way to Lynn Self at the Tarrant County Sheriff's Office.

Self is the program director of the sheriff's department courtesy patrol, the team that usually gets to the furniture first. He was able to take us part of the way through this Journey of the Lost Mattress. Here's what we learned.

What sort of stuff ends up on the highway?

It depends on the time of year. In December and early January, you're likely to see Christmas trees. In the summer, it's more likely to be an assortment of grills and patio furniture.

More on DEBRIS, 6E



Arts 3E

'Boardwalk' brings Scorsese to TV

Books 4E

Tom Grimes pens a stellar memoir

Style 5E

New products we're loving for fall

TODAY'S AGENDA



Jacquelyn Piro Donovan as Maria in *The Sound of Music*
Star-Telegram/Joyce Marshall

'Sound of Music' singalong

Warm up your *Do-Re-Mi's* because tonight's performance of *The Sound of Music* at Casa Mañana — the last in the show's run there — is an audience singalong. The curtain goes up at 7 p.m. (Note: The 2 p.m. matinee performance is not a singalong.) Tickets are \$37-\$62; \$52 for students (plus fee if you purchase tickets online). *Star-Telegram* Press Pass holders can receive 50 percent off of tickets in specific sections for this performance; you must present your pass at the time of purchase. 817-332-2272; www.casamanana.org.

War and pieces

Where else could you find a twofer like this that puts a militaria exhibition and a quilt show across the hall from each other? They're both at Will Rogers Memorial Center's Amon G. Carter Jr. Exhibits Hall. The militaria show is 9 a.m.-4 p.m. today. Admission is \$10 adults (kids under 12 get in free if accompanied by an adult). The Trinity Valley Quilt Show is in the West Texas Room, 10 a.m.-5 p.m. today. Admission is \$7. www.tvqg.org

Return of the Pixies

Postpunk heroes the Pixies are back together and playing Verizon Theatre at Grand Prairie at 8:30 tonight. If you need extra incentive to go, the band will be playing its groundbreaking album *Doolittle*, which includes the hits *Monkey's Gone to Heaven* and *Debaser*, in its entirety. Tickets are \$42.50-\$55. Verizon Theatre is at 1001 Performance Place, Grand Prairie. 800-745-3000; www.ticketmaster.com
Have an item for Agenda? Send it to listings@star-telegram.com.

WHAT'S AHEAD

MON Are vitamins really worth the money you spend on them? **In Your Health**

TUE It's time to curl up and take a look at the fall books **In Your Life**



Star-Telegram

WED Hit the road with a picnic basket filled with gourmet treats **In Your Life & Food**

Debris

Continued from 1E

Tire blowouts are more common when it's hot. Landscaping trucks are all over town when it's summer, and, well, people move a lot this time of year. And they don't secure their stuff.

Mattresses are common year-round, because even people with a Honda Civic and one piece of old rope think they can tote a queen-size mattress, no problem. And sometimes they're wrong.

What else? "I've seen bathtubs," says Ronnie Sanders, a shift supervisor for the courtesy patrol. "Unoccupied, of course."

More common are refrigerators, because drivers will leave a 200-pound fridge standing upright in the back of a truck, then secure the towering mass with a single frayed bungee cord. "People stand them up straight rather than lay them down, and the wind catches them," Sanders says. Even over the phone, you can tell he's shaking his head.

Wheelbarrows are frequently lost from trailers or trucks. So are lumber and landscaping tools.

Ladders are especially dangerous: They'll fly off a truck, and often they'll break into large metal pieces that scatter across the road. A box of roofing nails can bounce out of a truck, land on the highway and give everybody a flat tire until traffic is completely stopped and the highway is swept clean.

Kitchen chairs and bar stools are common road debris, mainly because they're lightweight and notoriously hard to tie down.

And clothing. Yes, clothing. If you lug around a basket of laundry, just don't put it in the back of your truck. When you speed up, a whole week's worth of T-shirts may start flying. Sanders has seen this more than once.

So what happens to all that stuff?

Well, first it scares a lot of people. Most furniture flies off of a vehicle and lands in a lane of traffic. (Sometimes the driver realizes he has lost a load and pulls over, gets out and tries to retrieve what he has lost. Not a good idea. Repeat: *Not a good idea.*)

Then, if it doesn't cause an accident, one of those drivers might report it as a road hazard.

That's when it becomes the responsibility of the courtesy patrol.

The courtesy patrol is a group of yellow-suited heroes on white horses (well, white Ford F-250s) who ride to the rescue when someone is stranded on the highways of Tarrant County. From 6 a.m. to 10 p.m., several patrol teams travel the highways, helping motorists and generally doing good in the world.

They help an average of 1,300 motorists in Tarrant County each month. They also are the ones who show up when there's a mattress or a love seat clogging up the left-hand lane.

How does road debris — a ripped-up plaid recliner on I-30, for instance — get picked up?

It's a two-part process, Self says, and a tag-team effort. Team 1 is the courtesy patrol, which is responsible for moving the debris to the side of the road, out of the way of traffic. They move an average of 160 pieces of debris off the road each month. That number goes up in the summer — last August [2009], it was 248, which is eight pieces of life-endangering junk every day.

When someone reports that there's a recliner in the road, a stream of activity begins.

"If somebody loses a dining room table," he says, "and a semi should hit it and blow it into piec-



Sean Southern, left, and Ronnie Sanders of the Tarrant County Sheriff's Office courtesy patrol prepare to remove debris from a stretch of Loop 820.

Star-Telegram/Max Faulkner



Sean Southern, a shift supervisor with the courtesy patrol, prepares to retrieve tire debris from the lanes of Loop 820.

Star-Telegram/Max Faulkner

What to do about furniture in the road

■ If it is in a lane of traffic, call 911 or the number on the back of your Texas driver's license: 800-525-5555. Either number will direct your report to a dispatcher for the courtesy patrol.

■ You can do this whether it's debris you encountered or a load you lost from your own vehicle.

■ And if you do report a load you lost, you won't get in trouble for not clearing the road yourself. On the contrary: Officials say that under no circumstances should you try to run out into the highway and remove debris. Leave that to the police or the guys with the neon-yellow clothing and orange flags.

Where's the junk?

Chad Wilson, owner of the contracting company that collects local highway debris, says he sees far more junk on Interstate 20 than any other highway in the county. So if you're going to see a piece of furniture on the road, your chances may be higher there. There's not a particular curve, hill or bump that causes people to lose their stuff, though.

"I'd say that, more than location, it's times of the year," says Ronnie Sanders, a shift supervisor for the sheriff's department courtesy patrol, which is responsible for getting the debris out of traffic.

Furniture and mattresses tend to land on all highways on the weekends, when people are moving, especially during busy moving seasons such as summer. And Sanders says there's more household flotsam in the road after the last weekend of the month, when people tend to do the most moving.

es, it'll be small fragments of wood. It's not going to impede a motorist if it's a small piece of wood."

So one 18-wheeler can potentially take care of things like wooden chairs. But anything metal gets picked up posthaste. A metal object is *never* a good thing to hit, Self says, whether you're in a Chevy Cobalt or a Mack truck.

How common is this, anyway?

Pretty common. On every eight-hour shift, the courtesy patrol gets three or four calls involving road debris. This time of year, most of that debris comes in the form of blown-out tires.

Enormous truck tires lose their tread, and become a 6-foot piece of flopping rubber and rough

wire in the road, with cars swerving to dodge it and — when that fails — rolling right over it. (Picking that stuff up can be tricky. "We call them gators," Sanders says, "because it's kind of like wrestling a gator.")

This is not just a side project for the courtesy patrol. Debris calls take priority over everything else, even accidents, because debris in the road is an immediate hazard for everyone on that stretch of highway.

We rode along with the courtesy patrol on an August afternoon. Our two-person team — Ronnie Sanders and Sean Southern — handled all matter of tire debris along I-30 and Loop 820 on a day so hot that melted tar was stick-

ing to their shoes.

When they receive a call about road debris, they rush to the spot and park the patrol truck on the shoulder of the road. They turn on the flashing arrow lights that will maybe, if they are lucky, guide traffic away from the debris-strewn lane. And then they put on hard hats and step out into speeding traffic, waving orange flags so that drivers will notice them and move over into another lane.

The flags seem very small in the face of an 18-wheeler moving 60 mph.

Finally, once traffic has slowed to a crawl and drivers are moving over into another lane, one of them will dart into the road, pull the debris out of the way

and drop it on the shoulder of the highway.

This all looks about as dangerous as it sounds.

"It's probably, by far, the most dangerous thing we do," Sanders says.

Sometimes they will use cones to close off a lane of traffic completely. If it's a big piece of debris — say, a couch that has to be pushed slowly to the shoulder — sometimes the police will arrive to help divert traffic.

Often, Sanders says, the courtesy patrol team arrives to find the debris creating chaos in the road.

"We get there," he says, "and we're working the traffic to try to get it under control to remove the debris. And we'll see it [get] hit and thrown into other

vehicles — 'Oh, that was a leg off a coffee table.' "

Ouch.

What happens to that debris once it's out of the way of traffic?

The courtesy patrol is responsible only for moving the debris to the side of the highway. It gets picked up and hauled away later by a private contractor, the Wichita Falls-based Wilson Contracting.

Chad Wilson is the owner of Wilson Contracting. His company is responsible for gathering up debris of all kinds — "anything bigger than a cigarette pack" — from the highway's shoulder and a 5-foot swath beyond it on either side, in the median or the grass.

In high debris season, from April to October, Wilson's company will make a sweep of Tarrant County highways twice a week, with seven debris trucks and 11 "shadow" trucks running every day.

Debris trucks are pickups with a wire-walled receptacle in the bed that can be piled high with all sorts of junk from the road. Shadow trucks, meanwhile, are the crash-cushion trucks that follow behind; they have flashing lights and guiding arrows, but they're ready to cushion the blow if a driver doesn't react in time.

Once it's collected, the debris goes to a holding yard off I-35 in south Fort Worth, where it is sorted and disposed of. Tires are pulled out of the mess; metal is saved for scrap.

"The biggest portion of it is trash," Wilson says, and that gets stored in big containers and then taken to the dump. Wilson's company hauls away 70 or 80 cubic yards of compacted trash every week.

Most of the stuff his crews pick up is litter and tire rubber, Wilson says.

He thinks for a minute. "We do get several mattresses a week."

Those go straight into the trash, so don't count on claiming your lost Sealy Posturepedic. In fact, don't count on claiming much of anything you lose along the highway.

"If it's a piece of debris that may be considered valuable, then we'll notify TXDOT and let them know what it is," says Self.

But by the time Wilson's trucks swing through to pick it up, it's usually in pieces on the side of the road. On the rare occasion that it's still in one nice piece, it doesn't get to the dump right away.

"If it's usable furniture," Wilson says, "I let my guys take it."

That's right: It gets taken home by the ones who pick it up. That only seems fair.

Alyson Ward, 817-390-7988



Southern gets his mangled piece of tire rubber. "We call them gators," co-worker Ronnie Sanders says.

Star-Telegram/Max Faulkner